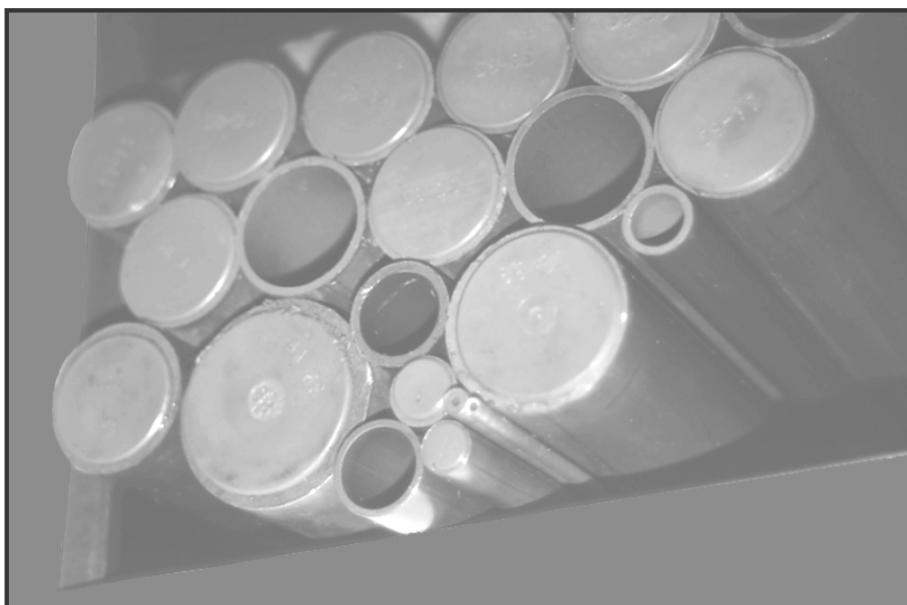


HYDRAULIC LINE TUBING



Seamless Hydraulic Line Tubing, manufactured to EN 10305-4, E 235+N in metric sizes from 4mm to 60mm in various wall thicknesses and only in 6m lengths.

Also available ex-import in Stainless Steel AISI304, 321 and 316 TI.

In addition to the Phosphated Tubing we also keep a range of Zinc Coated ones.

HYDRAULIC LINE TUBING

SEAMLESS HYDRAULIC STEEL TUBING EN 10305-4, E 235+N IN 6m LENGTHS

TUBE SIZE	WEIGHT /M	W/P BAR
4 x 1	0.074	539
6 x 1	0.123	359
6 x 1.5	0.166	539
6 x 2	0.197	719
8 x 1	0.173	269
8 x 1.5	0.240	404
8 x 2	0.296	539
10 x 1	0.222	216
10 x 1.5	0.314	323
10 x 2	0.395	431
12 x 1	0.271	180
12 x 1.5	0.388	269
12 x 2	0.493	359
12 x 2.5	0.600	449
12 x 3	0.666	539
14 x 1.5	0.460	231
14 x 2	0.592	308
15 x 1	0.350	144
15 x 1.5	0.499	216
15 x 2	0.641	287
16 x 1.5	0.536	202
16 x 2	0.691	269
16 x 2.5	0.832	337
16 x 3	0.962	404
18 x 1.5	0.610	172
18 x 2	0.789	229
18 x 3	1.110	344
20 x 2	0.888	206
20 x 2.5	1.079	258
20 x 3	1.258	310
20 x 4	1.578	413
22 x 2	0.986	188
22 x 2.5	1.200	235
25 x 2	1.134	165
25 x 2.5	1.387	206
25 x 3	1.628	248
25 x 4	2.072	330
28 x 2	1.282	147
28 x 3	1.850	221
30 x 2.5	1.695	172
30 x 3	1.998	206
30 x 4	2.565	275
35 x 2	1.628	118
35 x 3	2.367	177
38 x 3	2.589	163
38 x 4	3.354	217
38 x 5	4.069	272
42 x 2	1.973	094
42 x 3	2.885	141
42 x 4	3.750	188
50 x 5	5.550	237
50 x 6	6.509	197
50 x 8	8.290	316
60 x 6	7.990	197